



SSCS40101N1

Schottky Barrier Diode

● Features

- ✧ Small Surface Mounting Type
- ✧ Ideal for Automated Placement
- ✧ Ultrafast Reverse Recovery Time
- ✧ Low Power Losses, High Efficiency
- ✧ Low Forward Voltage Drop
- ✧ High Surge Capability
- ✧ RoHS Compliant

● Applications

- ✧ Low Voltage
- ✧ High-Frequency Inverters
- ✧ Free Wheeling
- ✧ Polarity Protection

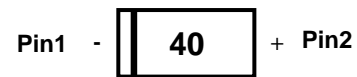
● PIN configuration



DFN1006-2L(Bottom View)



Circuit Diagram



Marking(Top View)

● Absolute maximum rating @T_A=25°C

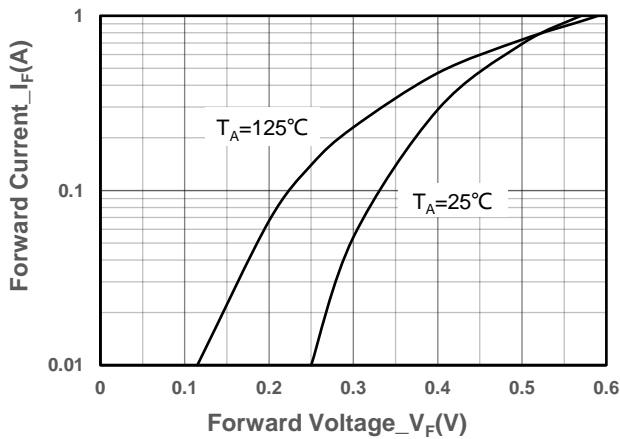
Parameter	Symbol	Value	Unit
Reverse Voltage(Repetitive Peak)	V _{R(RM)}	40	V
Reverse Voltage(RMS)	V _{R(RMS)}	32	V
DC Blocking Voltage	V _R	40	V
Average Rectified Forward Current	I _O	1	A
Non-Repetitive Peak Forward Surge Current@ t=8.3ms	I _{FSM}	8	A
Power Dissipation	P _D	500	mW
Thermal Resistance Junction to Ambient(Typ)	R _{θJA}	120	°C/W
Operating Temperature	T _J	55 ~ +125	°C
Storage Temperature	T _{STG}	-55 ~ +150	°C



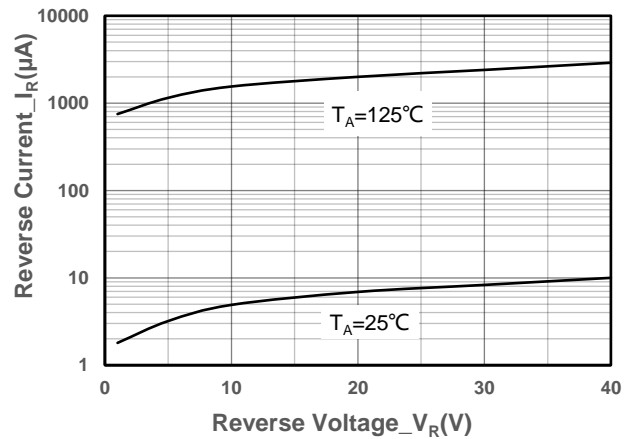
● Electrical Characteristics @T_A=25°C

Parameter	Symbol	Conditions	Min.	Typ.	Max.	Unit
Breakdown Voltage	V _{BR}	I _R = 1mA	40			V
Reverse Current	I _R	V _R = 40V		10	40	μA
Forward Voltage	V _F	I _F = 100mA			0.38	V
		I _F = 200mA			0.40	
		I _F = 500mA			0.49	
		I _F = 700mA			0.55	
		I _F = 1A			0.61	
Total Capacitance	C _T	V _R = 0V, f = 1MHz		75	120	pF

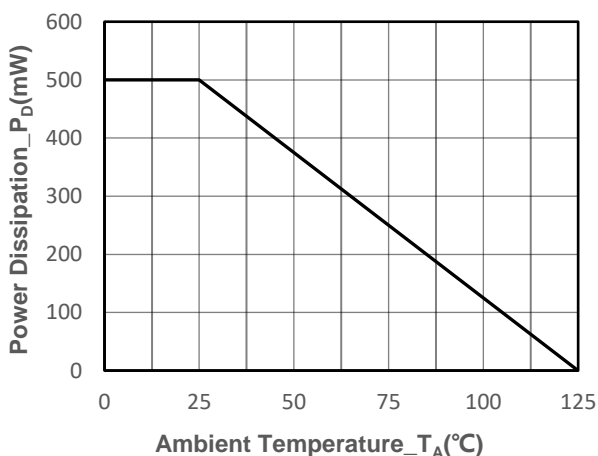
● Typical Performance Characteristics



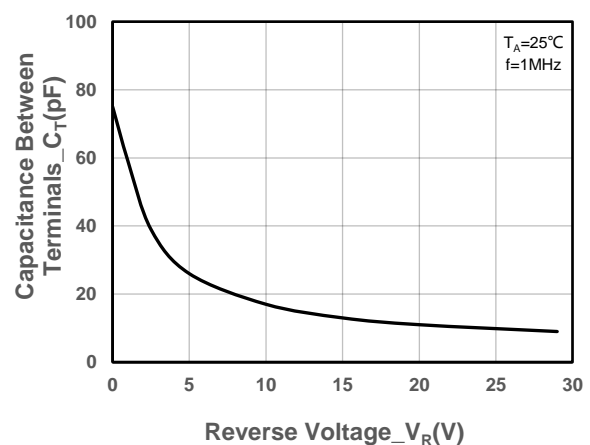
Forward Voltage vs. Forward Current



Reverse Voltage vs. Reverse Current



Power Derating vs. Ambient Temperature



Total Capacitance vs. Reverse Voltage



● Package Information

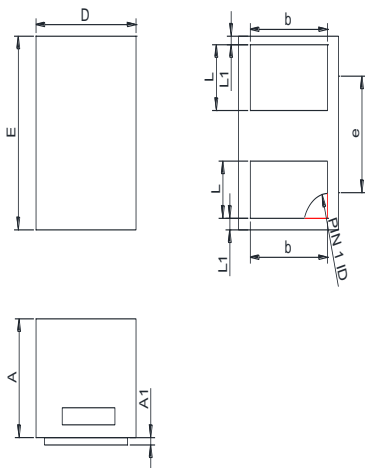
Ordering Information

Device	Package	Marking	Qty per Reel	Reel Size
SSCS40101N1	DFN1006-2L	40	10000	7 Inch

Mechanical Data

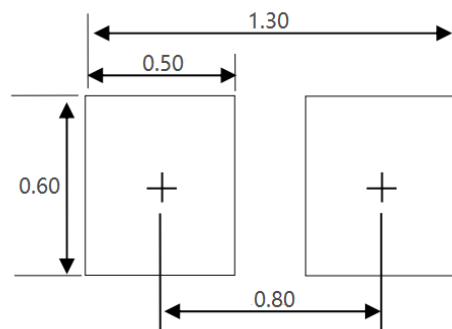
Case: DFN1006-2L

Case Material: Molded Plastic. UL Flammability



DIM	Millimeters	
	Min	Max
A	0.45	0.55
A1	0.00	0.05
D	0.55	0.65
E	0.95	1.05
b	0.45	0.60
e	0.65TYP	
L	0.2	0.3
L1	0.05REF	

Recommended Pad outline



Unit:mm



DISCLAIMER

AFSEMI RESERVES THE RIGHT TO MAKE CHANGES WITHOUT FURTHER NOTICE TO ANY PRODUCTS HEREIN TO IMPROVE RELIABILITY, FUNCTION OR DESIGN. AFSEMI DOES NOT ASSUME ANY LIABILITY ARISING OUT OF THE APPLICATION OR USE OF ANY PRODUCT OR CIRCUIT DESCRIBED HEREIN; NEITHER DOES IT CONVEY ANY LICIENCE UNDER ITS PATENT RIGHTS, NOR THE RIGHTS OF OTHERS.

THE GRAPHS PROVIDED IN THIS DOCUMENT ARE STATISTICAL SUMMARIES BASED ON A LIMITED NUMBER OF SAMPLES AND ARE PROVIDED FOR INFORMATIONAL PURPOSE ONLY. THE PERFORMANCE CHARACTERISTICS LISTED IN THEM ARE NOT TESTED OR GUARANTEED. IN SOME GRAPHS, THE DATA PRESENTED MAY BE OUTSIDE THE SPECIFIED OPERATING RANGE (E.G., OUTSIDE SPECIFIED POWER SUPPLY RANGE) AND THEREFORE OUTSIDE THE WARRANTED RANGE.